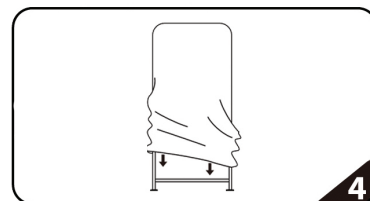
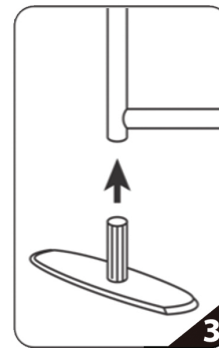
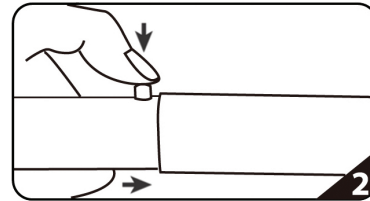
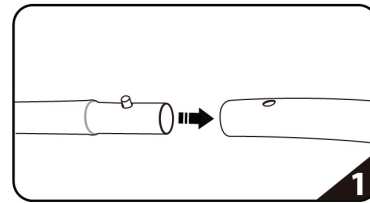
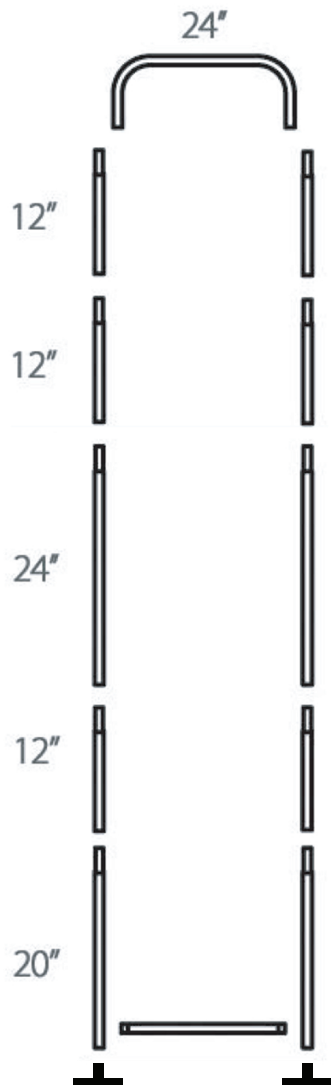


SET UP INSTRUCTIONS



1. Connect tubes based on diagram above
2. Insert reduced end into receiving tube and making sure to push spring button down
3. Once the tube is fully inserted the spring button will pop through hole of receiving tube. The tubes may need to be rotated for spring button to line up with hole in receiving tube.
4. Once frame is fully assembled attach both feet using the same process as steps 1-3
5. Lastly pull pillowcase graphic over frame and zip it closed underneath the bottom cross bar to complete frame and graphic set up.

