

EZ STAND 5FT

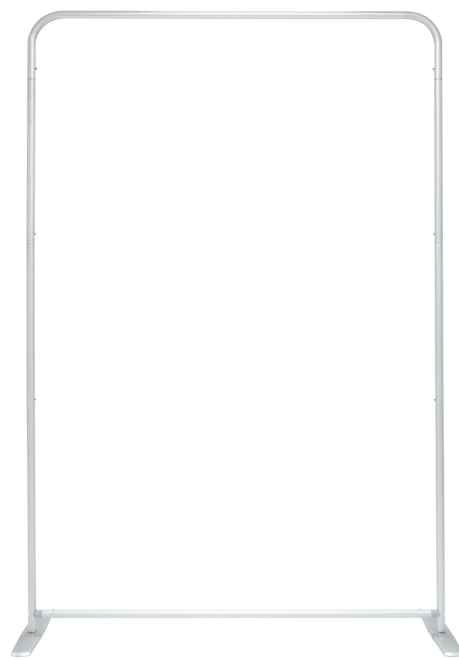
EZ TUBE FABRIC DISPLAYS

PRODUCT CODE: EZSTND-5FT



On Frame

OnGraphic



PRODUCT DESCRIPTION

With a sleek and thinner diameter, our new EZ Stand frames are a great alternative to our premium back wall displays. Quickly assembled in just minutes, slide the tubes together and lock them in place with a push button snap to assemble the frame. Then, simply pull the pillowcase-like graphic over the frame and zip it shut. The bottom zipper - hidden from view, tightens the stretch fabric beautifully displaying your graphic from edge to edge. Available in various widths and heights there is an EZ Stand for almost any occasion. Add an option Silver Bag to store your stand and graphic in between events or LED lights to highlight your message.

DISPLAY DIMENSIONS	60"W x 90"H x 17.6"D
GRAPHIC SIZE	62"W x 90"H

GRAPHIC MATERIAL

Dye Sublimated Stretch Fabric

GRAPHIC FINISHING

Pillowcase finishing with #10 zipper across the bottom

DISPLAY CONSTRUCTION

30mm Silver anodized aluminum tube frame

SHIPPING WEIGHTS & DIMENSIONS

Shipping Weight	7 lbs (Hardware Only) 11 lbs (Graphic Package) 4 lb (Graphic Only)
Shipping Dimensions	51"L x 11"W x 4"H (Hardware Only) 51"L x 11"W x 4"H (Graphic Package) Poly Bag (Graphic Only)

AVAILABLE ACCESSORIES

EZ Tube LED Light Silver	EZ Tube LED Light Black
Silver Bag 60"	



Tool Free Flat Feet
(1.9in W x 17.6in L x 6mm H)



Optional Silver Bag
SKU: SBAG60

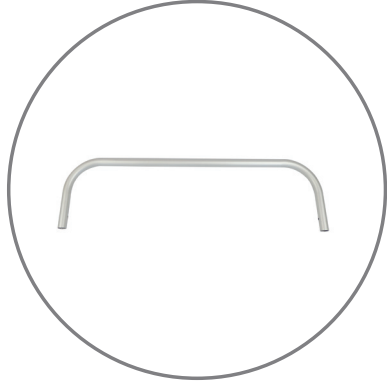


Optional LED Light Silver
SKU: EZT-LEDSL

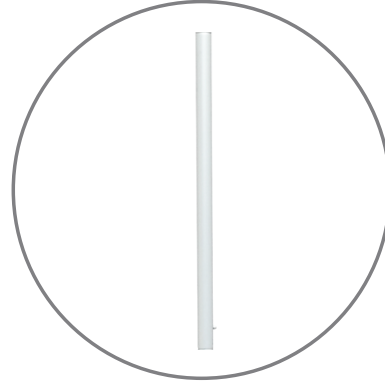


Optional LED Light Black
SKU: EZT-LEDBLK

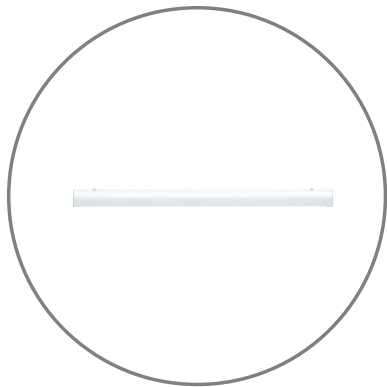
HARDWARE ONLY PARTS LIST



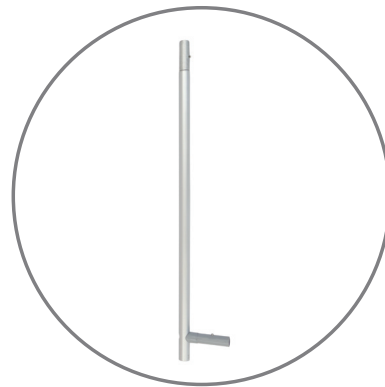
Qty.1 - 60" Top Tubing



Qty.4 - 24" Vertical Tubing



Qty. 1 - Bottom Tubing

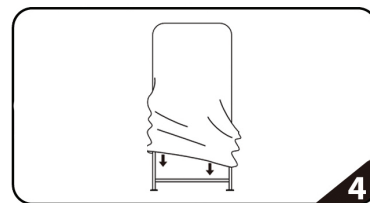
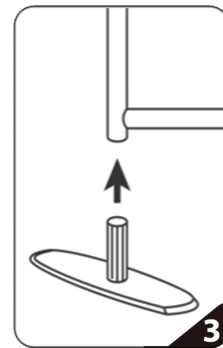
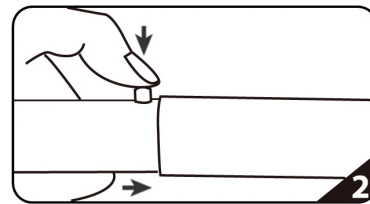
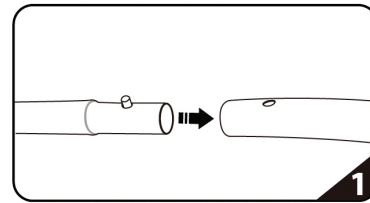
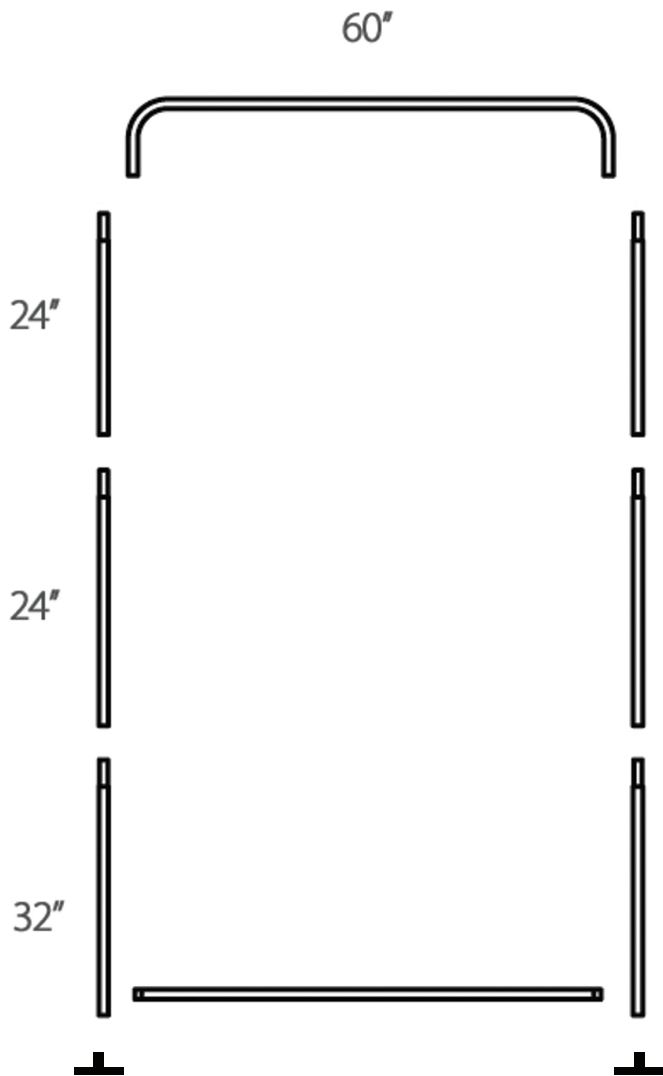


Qty.2 - 32" Vertical Tubing



Qty.2 - Tool Free Feet

SET UP INSTRUCTIONS



Connect tubes based on diagram above

1. Insert reduced end into receiving tube and making sure to push spring button down
2. Once the tube is fully inserted the spring button will pop through hole of receiving tube. The tubes may need to be rotated for spring button to line up with hole in receiving tube.
3. Once frame is fully assembled attach both feet using the same process as steps 1-2
4. Lastly pull pillowcase graphic over frame and zip it closed underneath the bottom cross bar to complete frame and graphic set up.

